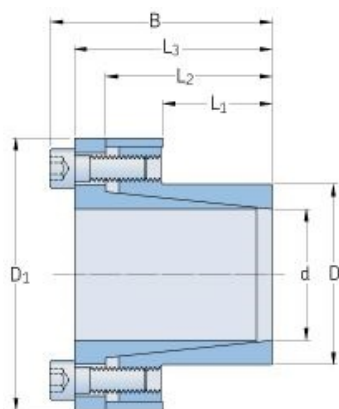


PHF FX20-39X50



Bushing no.	FX20
d (mm)	39
d (in)	1.54
D (mm)	50
d _w (mm)	-
L (mm)	-
L ₁ (mm)	32
L ₂ (mm)	45
L ₃ (mm)	52
B (mm)	58
D ₁ (mm)	72
d ₁ (mm)	-
e (mm)	-
F _t Transmissible axial force (kN)	45
M _t Transmissible torque (Nm)	860
P _w Shaft surface pressure (N/mm ²)	100
P _n Hub surface pressure (N/mm ²)	75
Clamp screws Qty	8
Clamp screws size	M6
Clamp screws nut	-
M _s Screw tightening torque (Nm)	17
Weight (kg)	0.61