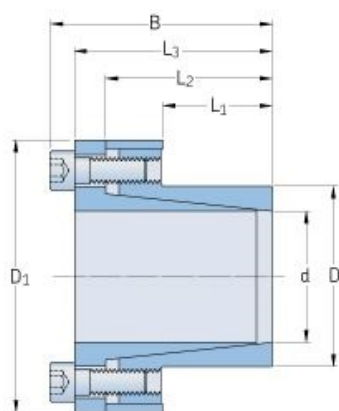


PHF FX20-11X18



Bushing no.	FX20
d (mm)	11
d (in)	0.43
D (mm)	18
d _w (mm)	-
L (mm)	-
L ₁ (mm)	14
L ₂ (mm)	23
L ₃ (mm)	26
B (mm)	30
D ₁ (mm)	32
d ₁ (mm)	-
e (mm)	-
F _t Transmissible axial force (kN)	9.98
M _t Transmissible torque (Nm)	54
P _w Shaft surface pressure (N/mm ²)	170
P _n Hub surface pressure (N/mm ²)	105
Clamp screws Qty	4
Clamp screws size	M4
Clamp screws nut	-
M _s Screw tightening torque (Nm)	4.9
Weight (kg)	0.07