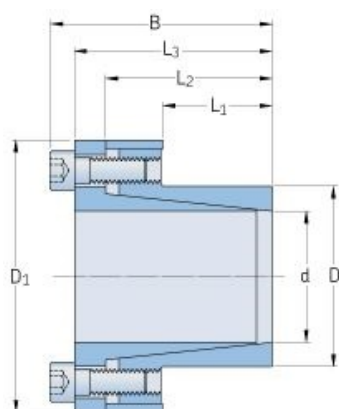


# PHF FX20-9X16



Bushing no.	FX20
d (mm)	9
d (in)	0.35
D (mm)	16
d <sub>w</sub> (mm)	-
L (mm)	-
L <sub>1</sub> (mm)	14
L <sub>2</sub> (mm)	23
L <sub>3</sub> (mm)	26
B (mm)	30
D <sub>1</sub> (mm)	28
d <sub>1</sub> (mm)	-
e (mm)	-
F <sub>t</sub> Transmissible axial force (kN)	9.98
M <sub>t</sub> Transmissible torque (Nm)	45
P <sub>w</sub> Shaft surface pressure (N/mm <sup>2</sup> )	210
P <sub>n</sub> Hub surface pressure (N/mm <sup>2</sup> )	120
Clamp screws Qty	4
Clamp screws size	M4
Clamp screws nut	-
M <sub>s</sub> Screw tightening torque (Nm)	4.9
Weight (kg)	0.06