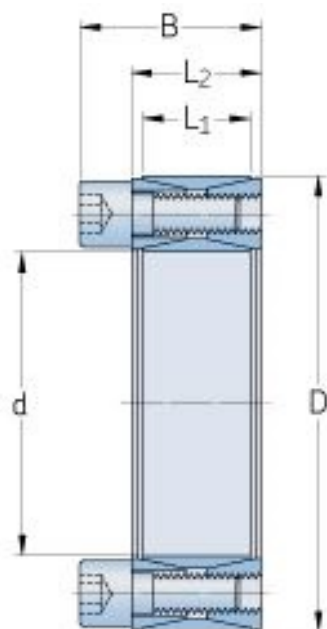


PHF FX10-40X65



Número do casquilho	FX10
d (mm)	40
d (in)	1.57
D (mm)	65
d _w (mm)	-
L (mm)	-
L ₁ (mm)	17
L ₂ (mm)	20
L ₃ (mm)	-
B (mm)	27.5
D ₁ (mm)	-
d ₁ (mm)	-
e (mm)	-
F _t (kN) Força axial transmissível (kN)	46
M _t (Nm) Torque transmissível (Nm)	920
P _w Pressão de superfície de eixo (N/mm ²)	180
P _n Pressão de superfície de cubo (N/mm ²)	110

® SKF is a registered trademark of the SKF Group

© SKF Group 2012

The contents of this publication are the copyright of the publisher and may not be reproduced (even extracts) unless prior written permission is granted. Every care has been taken to ensure the accuracy of the information contained in this publication but no liability can be accepted for any loss or damage whether direct, indirect or consequential arising out of the use of the information contained herein.

Quantidade de parafusos de aperto	14
Tamanho de parafuso de aperto	M6
Porca de parafuso de aperto	-
M _s Torque de aperto do parafuso (Nm)	15
Peso (kg)	0.3