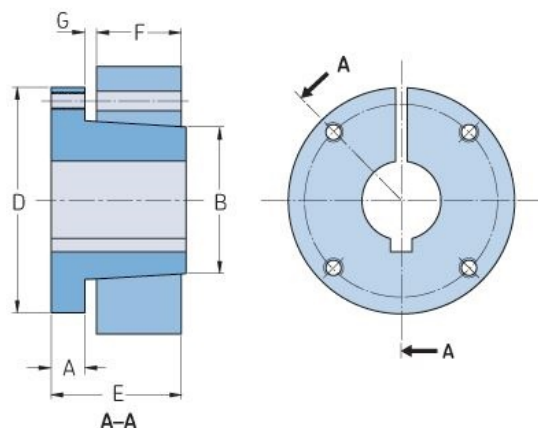


# PHF W-4-3/4



Bushing no.	W
Bore diameter (mm)	121
Bore diameter (in)	4.75
A (mm)	-
A (in)	-
B (mm)	-
B (in)	-
D (mm)	-
D (in)	-
E (mm)	-
E (in)	-
F (mm)	-
F (in)	-
G (mm)	-
G (in)	-
Bolt size	25.4
Weight (kg)	105.64
Weight (lbs)	232.9