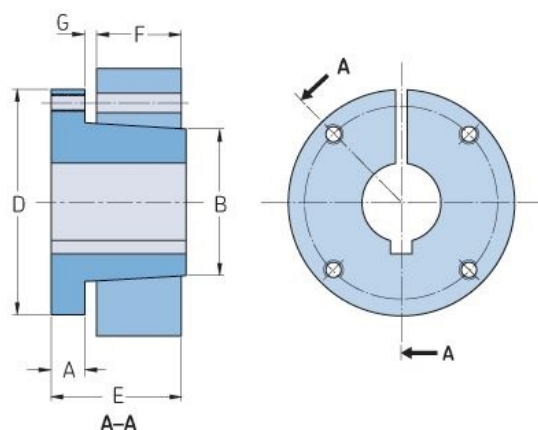


# PHF M-4-1/2



Bushing no.	M
Bore diameter (mm)	114
Bore diameter (in)	4.5
A (mm)	-
A (in)	-
B (mm)	-
B (in)	-
D (mm)	-
D (in)	-
E (mm)	-
E (in)	-
F (mm)	-
F (in)	-
G (mm)	-
G (in)	-
Bolt size	19.1
Weight (kg)	17
Weight (lbs)	37.48