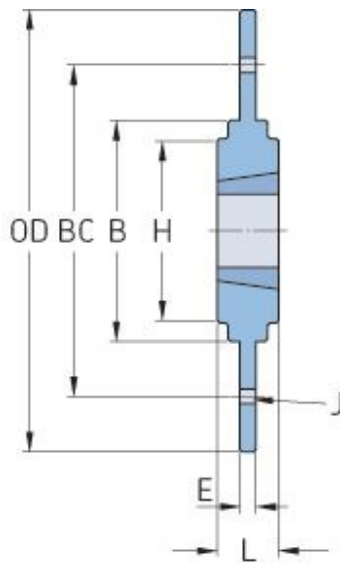


PHH SM12



Type	SM12
Bushing no.	1210
Outside diameter (mm)	180
Outside diameter (in)	7.09
B (mm)	90
B (in)	3.54
BC (mm)	135
BC (in)	5.31
L (mm)	25
L (in)	0.98
E (mm)	6.5
E (in)	0.26
H (mm)	75
H (in)	2.95
J (mm)	6 x 7.5
J (in)	-