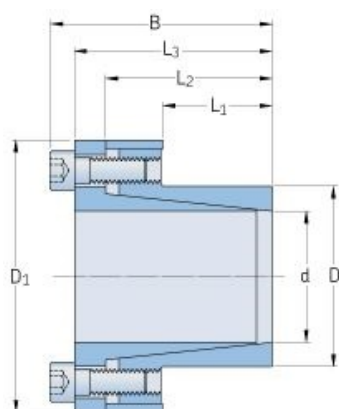


PHF FX20-32X43



Bushing no.	FX20
d (mm)	32
d (in)	1.26
D (mm)	43
d _w (mm)	-
L (mm)	-
L ₁ (mm)	25
L ₂ (mm)	38
L ₃ (mm)	45
B (mm)	51
D ₁ (mm)	65
d ₁ (mm)	-
e (mm)	-
F _t Transmissible axial force (kN)	33
M _t Transmissible torque (Nm)	540
P _w Shaft surface pressure (N/mm ²)	120
P _n Hub surface pressure (N/mm ²)	90
Clamp screws Qty	6
Clamp screws size	M6
Clamp screws nut	-
M _s Screw tightening torque (Nm)	17
Weight (kg)	0.47