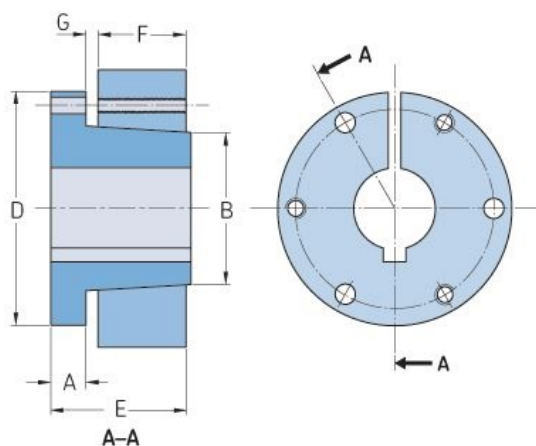


# PHF E-1-1/8



Bushing no.	E
Bore diameter (mm)	29
Bore diameter (in)	1.125
A (mm)	-
A (in)	-
B (mm)	-
B (in)	-
D (mm)	-
D (in)	-
E (mm)	-
E (in)	-
F (mm)	-
F (in)	-
G (mm)	-
G (in)	-
Bolt size	9.5
Weight (kg)	4.5
Weight (lbs)	9.92