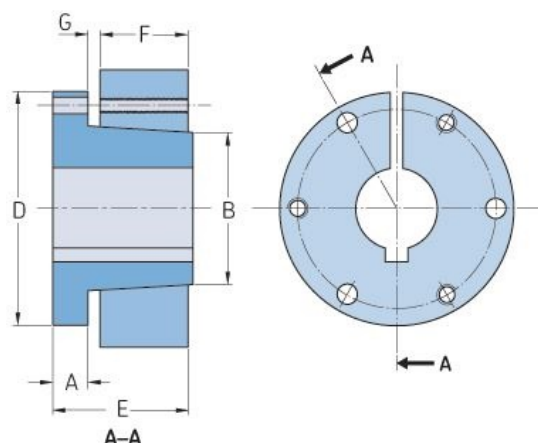


PHF SD-32MM



Bushing no.	SD
Bore diameter (mm)	32
Bore diameter (in)	1.26
A (mm)	10.92
A (in)	0.43
B (mm)	55.37
B (in)	2.18
D (mm)	80.77
D (in)	3.18
E (mm)	45.97
E (in)	1.81
F (mm)	31.75
F (in)	1.25
G (mm)	3.05
G (in)	0.12
Weight (kg)	0.7
Weight (lbs)	1.54